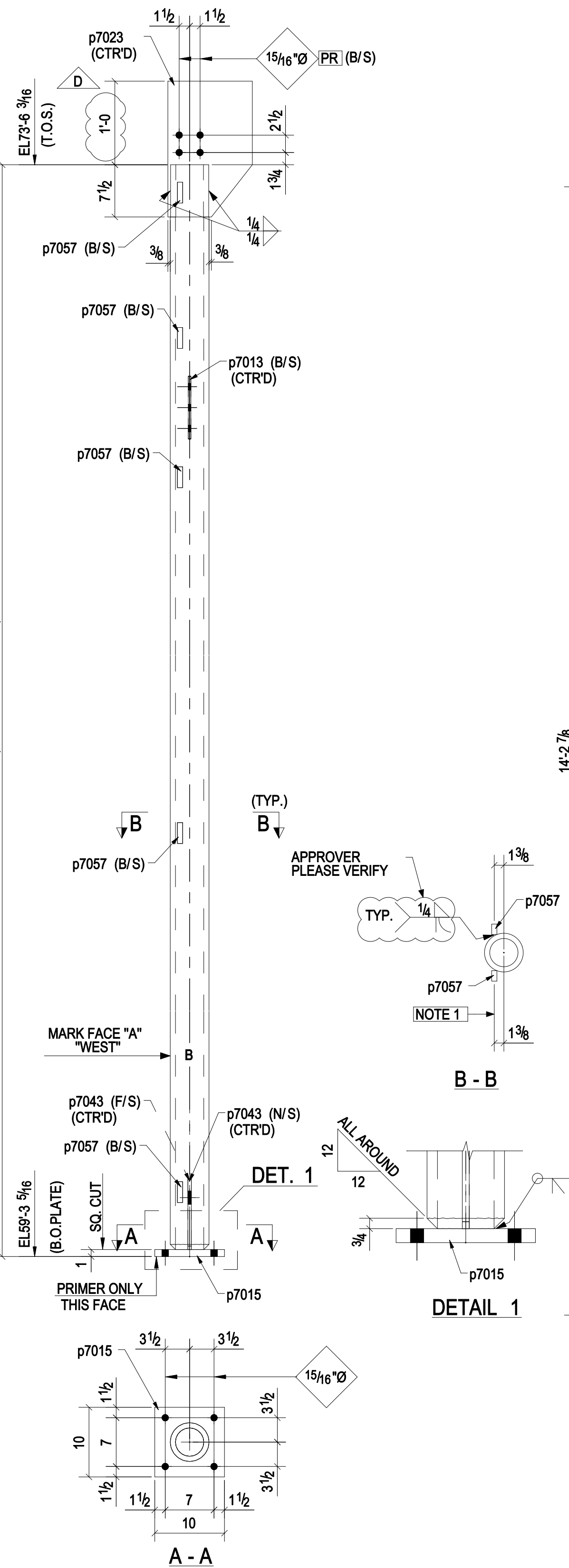


ONE - COLUMN - 701C1



ONE - COLUMN - 701C2

SURFACE FINISH: SSPC-SP6

PAINT SYSTEM-1

- (i) PRIMER CARBOZINC 859 2.5 TO 3.5 MILS DFT.
- (ii) TOP COAT CARBOGUARD 893SG 4.0 TO 6.0 MILS DFT.
- (iii) COLOR UTILITY TOOLBOX C703 MEDIUM GRAY.

BILL OF MATERIAL

Qty	Ship Mark	Qty Unit	DESCRIPTION	Weight lbf	LENGTH	Grade	REMARKS
701C1		1	PIPE5XXS	515.50	14'-1 7/8"	A53-GR.B	
2	p7013	2	FL3/8"X4"	7.66	0'-9"	A36	
1	p7015	1	FL1"X10"	28.36	0'-10"	A36	
1	p7023	1	PL1/2"X12 1/8"	30.40	1'-7 1/2"	A36	
2	p7043	2	PL1/2"X5 5/8"	11.53	0'-10 3/16"	A36	
10	p7057	10	FL3/4"X1 1/2"	9.57	0'-3"	A36	
		4	7/8"Ø A325SC BOLT		0'-3"	Site	
701C2		1	PIPE5XXS	515.50	14'-1 7/8"	A53-GR.B	
2	p7013	2	FL3/8"X4"	7.66	0'-9"	A36	
1	p7015	1	FL1"X10"	28.36	0'-10"	A36	
1	p7023	1	PL1/2"X12 1/8"	30.40	1'-7 1/2"	A36	
2	p7045	2	PL1/2"X5 5/8"	17.18	0'-11 3/16"	A36	
10	p7057	10	FL3/4"X1 1/2"	9.57	0'-3"	A36	
		4	7/8"Ø A325SC BOLT		0'-3"	Site	
			TOTAL WEIGHT THIS DRAWING	612.55			