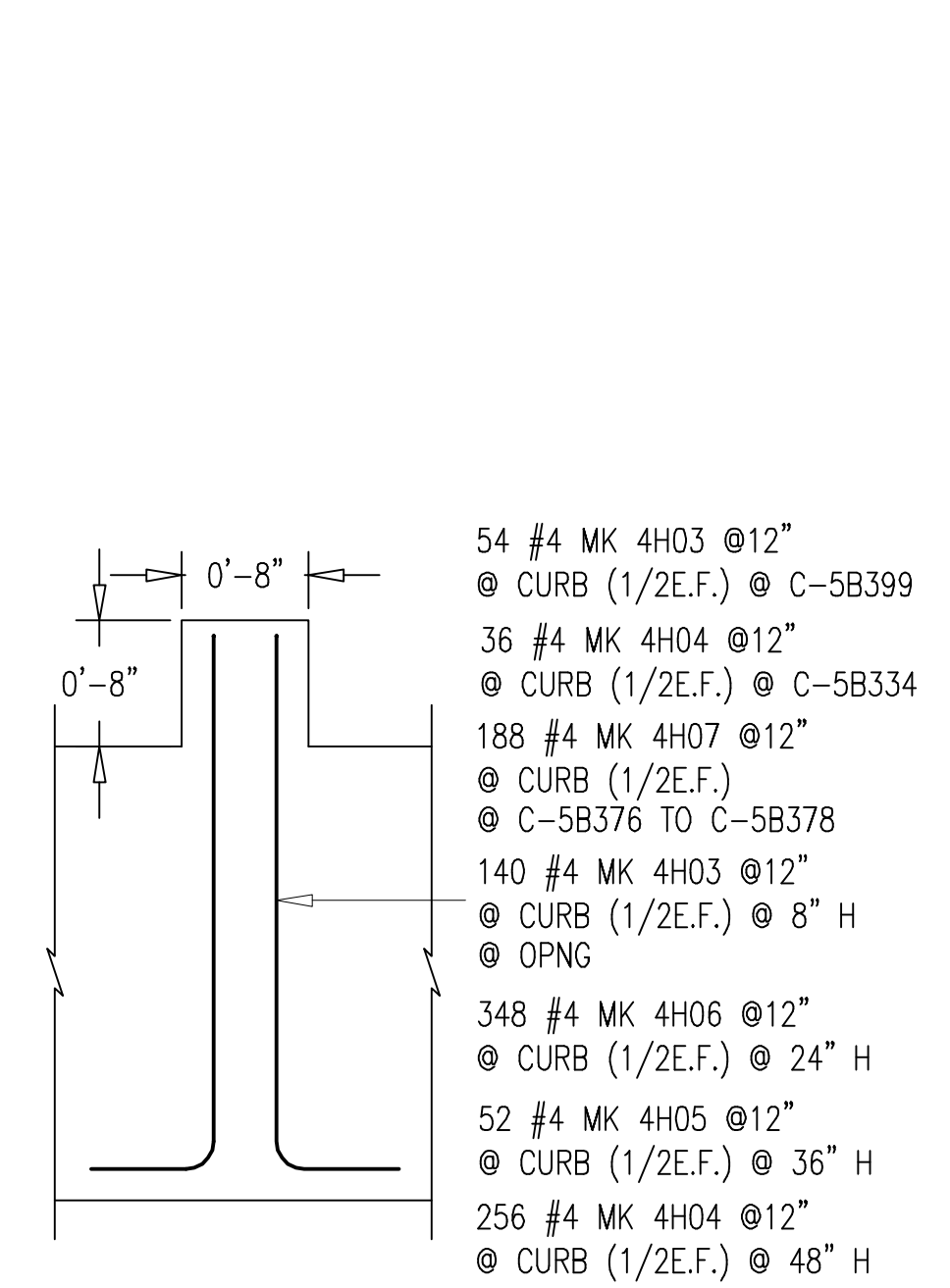


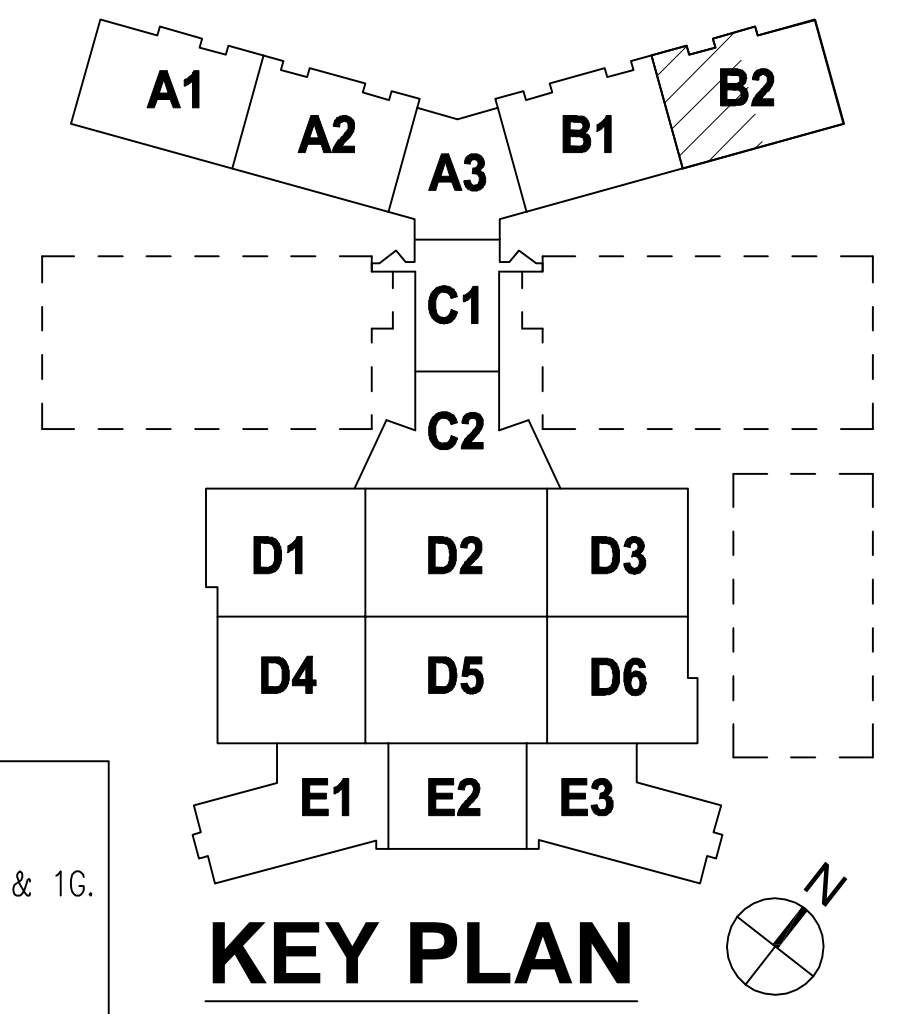
LEVEL-5, AREA-B2 (POUR 1) SLAB DETAILS
 SCALE: 1/8"=1'-0"
 REF: H-SF15FB2 (04/12/10)

BENDING DETAILS																
Release Code: RB5_2P_0																
Bar Mark	Qty	Size	Total Length	Type	"A"	"B"	"C"	"D"	"E"	"F"	"G"	"H"	"J"	"K"	"O"	"R"
4H03	184	#4	36'	2	08"	210'										
4H04	292	#4	410'	2	08"	42'										
4H05	52	#4	3'11"	2	08"	33'										
4H06	348	#4	2'10 1/2"	2	08"	22 1/2'										
4H07	188	#4	50'	2	08"	44'										
4H08	15	#4	106'	2	08"	910'										
4H09	14	#4	102'	2	08"	96'										
4H10	5	#4	113'	2	08"	107'										
4H11a	2	#4	30'			30'										
4H11i	2	#4	300'			300'										
4H12a	1	#4	85'			85'										
4H12c	1	#4	170'			170'										
4H13	4	#4	95'	2	08"	89'										
5H01	5	#5	76 1/2'	2	010"	68 1/2'										
5H02	5	#5	1210'	2	010"	120'										
5H03	10	#5	148'	2	010"	1310'										
5H04	13	#5	121"	17	09"	114"										
7H01	27	#7	167'	2	12"	155'										



TYP. CURB DETAIL
 SCALE: 1"=1'-0"

BAR SUPPORTS	
3600'LFT @ 48"	SB 1 1/4" PLASTIC TIP.
400'LFT @ 48"	SB 3/4" PLASTIC TIP.



KEY PLAN

LAP FOR 5000 PSI.
LAP CHART - U.N.O.

BAR SIZE	LAP CLASS	TOP BARS	OTHER BARS
#3	A	17"	13"
	B	22"	17"
#4	A	22"	17"
	B	29"	22"
#5	A	28"	22"
	B	36"	28"
#6	A	33"	26"
	B	43"	33"
#7	A	49"	37"
	B	63"	49"
#8	A	55"	43"
	B	72"	55"
#9	A	63"	48"
	B	81"	63"
#10	A	70"	54"
	B	91"	70"
#11	A	78"	60"
	B	101"	78"

- NOTES:**
- 1) FOR BEAMS & JOISTS LOCATION PLAN REFER TO DRG. NO. RB5-1.
 - 2) FOR BEAMS DETAILS REFER TO DRG. NO. RB5-1A, 1B, 1C, 1D, 1E, 1F & 1G.
 - 3) FOR JOISTS DETAILS REFER TO DRG. NO. RB5-1H, 1J, 1K, 1L & 1M.
 - 4) FOR SLAB DETAILS REFER TO DRG. NO. RB5-1N, & 1P.
 - 5) DETAILED FROM STRUCTURAL DWGS. DATED 04/12/10

APPROVAL PRINT

TITLE	NEW ORLANDO VA MEDICAL CENTER		
PROJECT	LVL 5 SLAB DETAILS - AREA B2 (POUR-1)		
CUSTOMER			
DRAWN BY	*SS	CHECKED BY	*RP
DATE	05/14	DATE	

REV	REVISION DESCRIPTION	DATE	2 OF 2	ASC JOB #	DWG #
0	FOR APPROVAL	05/14		2112-2091	RB5-1P

- NOTES:**
- Top bars are horizontal bars with more than 12" of concrete cast below the bars.
 - When lapping different bar sizes use larger bar lap at exterior beams and lap to the smaller bar on interior beams.

THIS DRAWING TO BE USED FOR REBAR PLACEMENT ONLY