

CLEAR COVER			
ELEMENT	TOP	BOT	SIDES
MAT FTG	0'-2"	0'-3"	0'-2"

ASTM A615 GRADE 60 UNCOATED REINFORCING STEEL PLACING DRAWING ONLY USE IN CONJUNCTION WITH CONTRACT DRAWINGS AND SPECIFICATIONS. ELEVATIONS & DIMENSIONS SHOWN ON THIS DRAWING ARE FOR DETAILING PURPOSES ONLY AND ARE NOT TO BE USED FOR CONSTRUCTION UNLESS VERIFIED BY THE ENGINEER OR CONTRACTOR

5	01/07/2015	APPROVAL / DETAILER'S CORRECTION-2
4	01/06/2015	APPROVAL / DETAILER'S CORRECTION.
3	01/05/2015	APPROVAL / DETAILER'S CORRECTION. (ADDED THREADED BARS)
2	12/31/2014	APPROVAL / REVAS PER LATEST DWG
1	11/24/2014	APPROVAL / REVAS PER LATEST DWG
0	11/01/2014	APPROVAL
	DATE	SENT FOR

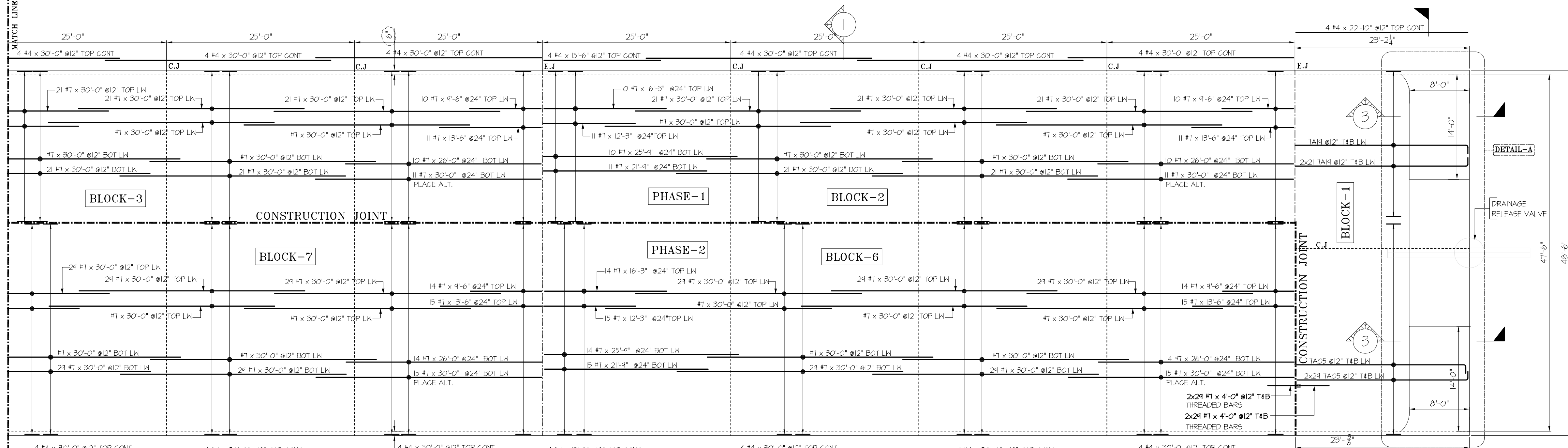
**SIMSONA CORPORATION**  
 2275 Research Boulevard, Suite 500, Rockville, MD 20850  
 Phone: 301-408-8553 Fax: 301-260-0234

STRUCTURE	WESTWAY TERMINAL RAILROAD.		
LOCATION	2801 RICHMOND STREET PHILADELPHIA, PA		
ARCHITECT	AMBRIC TECHNOLOGY CORPORATION		
ENGINEER	TECH CONSTRUCTION		
CUSTOMER	TECH CONSTRUCTION		
DATE	11/01/2014	DATE	11/01/2014
REV#	DATE	DESCRIPTION	CONTRACT NUMBER
5	01/07/2015	DETAILER'S CORR.-2	
4	01/06/2015	DETAILER'S CORRECTION.	
3	01/05/2015	REVAS PER E-MAIL COM (ADDED THREADED BARS)	
2	12/31/2014	REVAS PER LATEST DWG	
1	11/24/2014	REVAS PER LATEST DWG	
0	11/01/2014	FOR APPROVAL	
		MAT FOUNDATION	R1

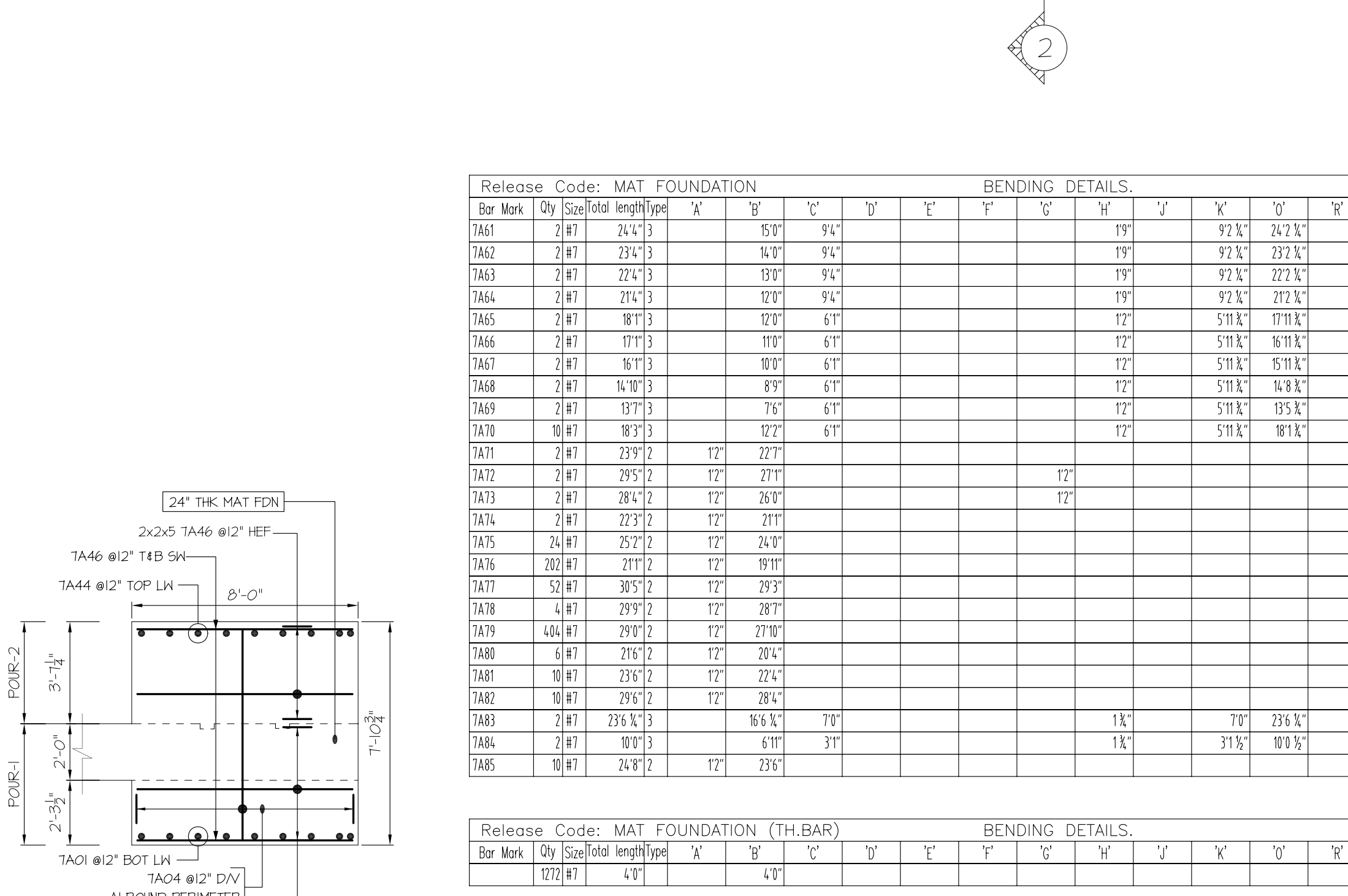
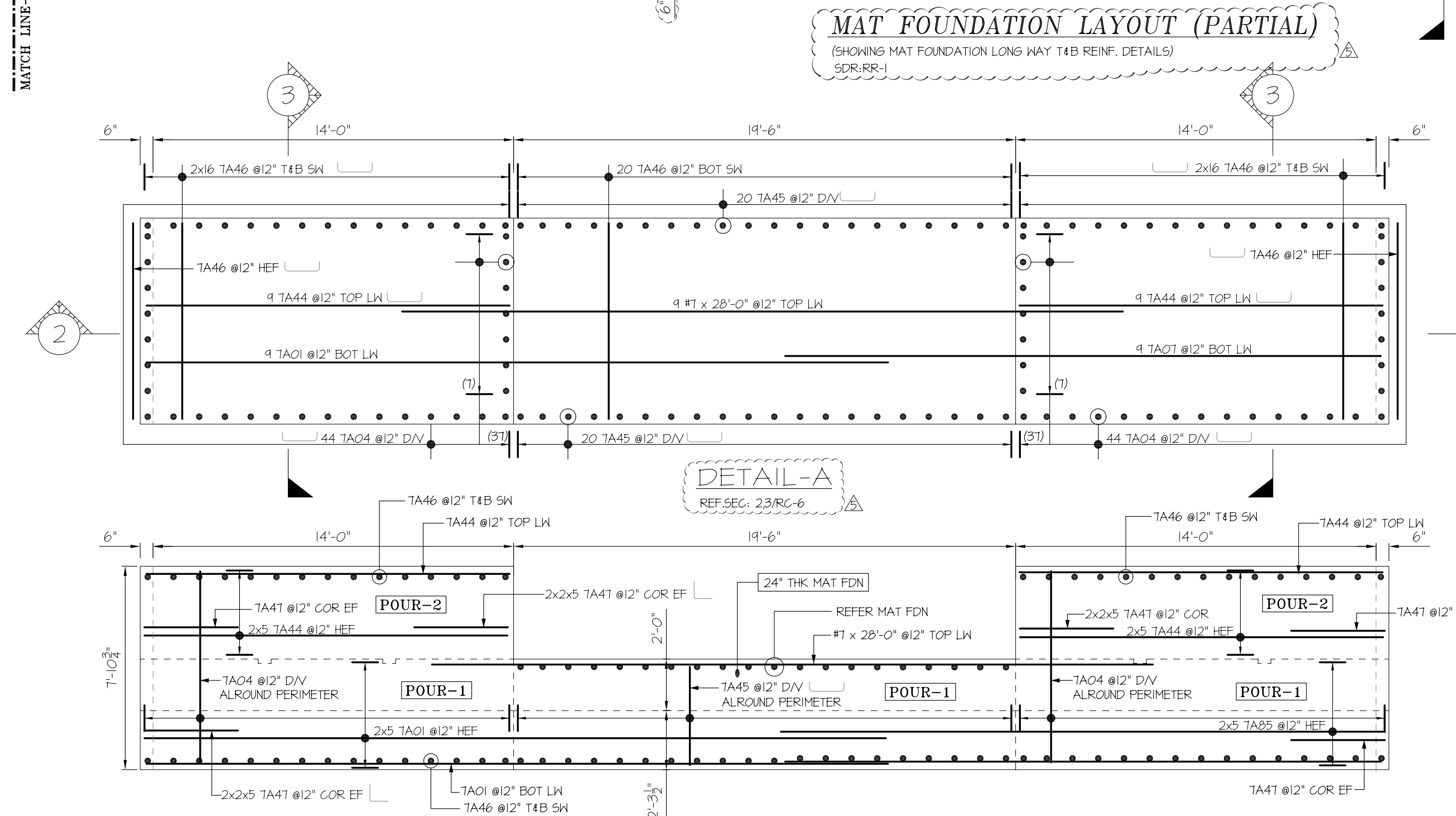
USE IN CONJUNCTION WITH THE CONTRACT DRAWING: RC-1 FOR SECTIONS SEE CONTRACT DRAWINGS: RC-2 TO RC-7

THIS PLACING DRAWING WAS PREPARED FROM CONTRACT DOCUMENTS DATED: 12-17-2014

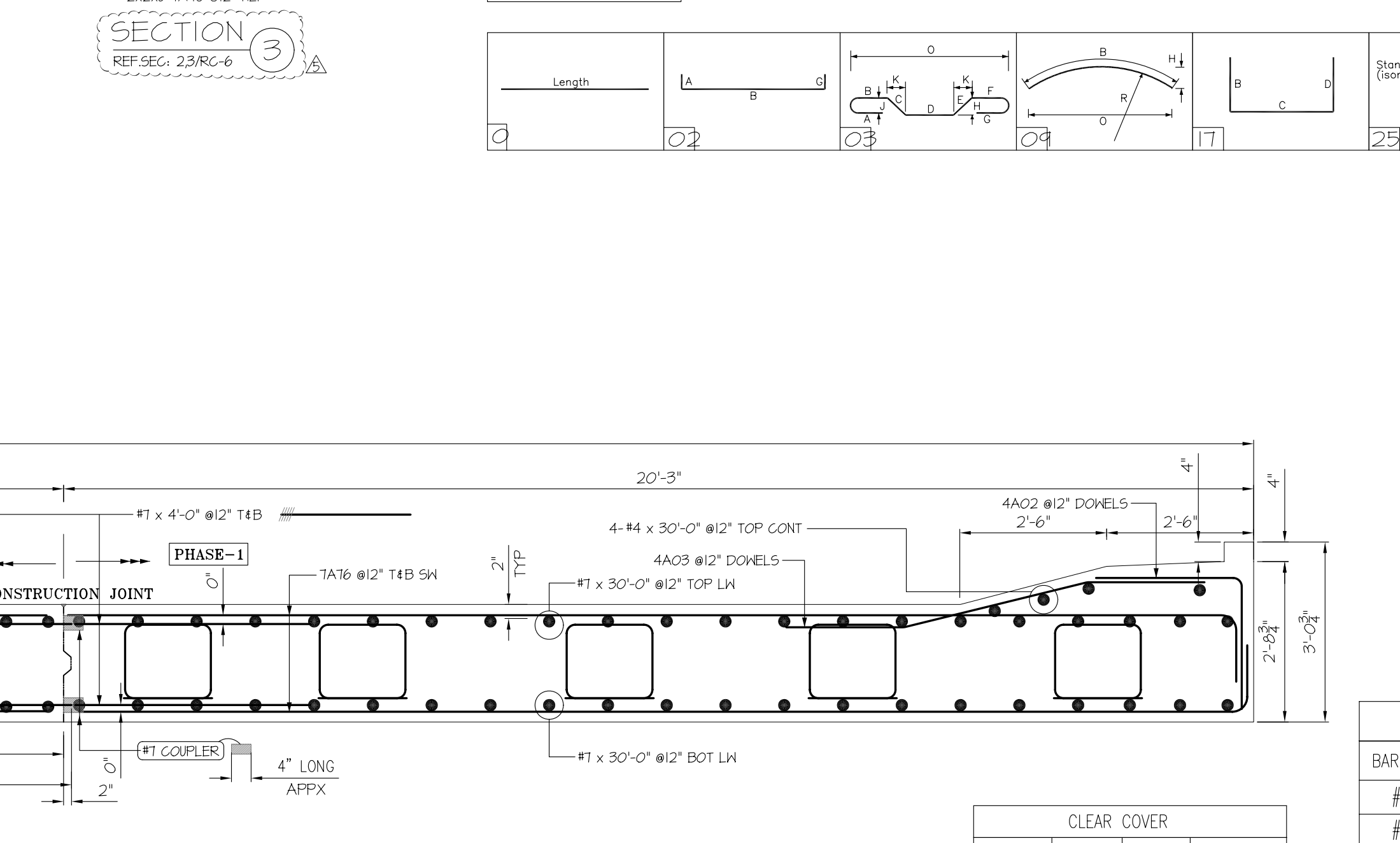
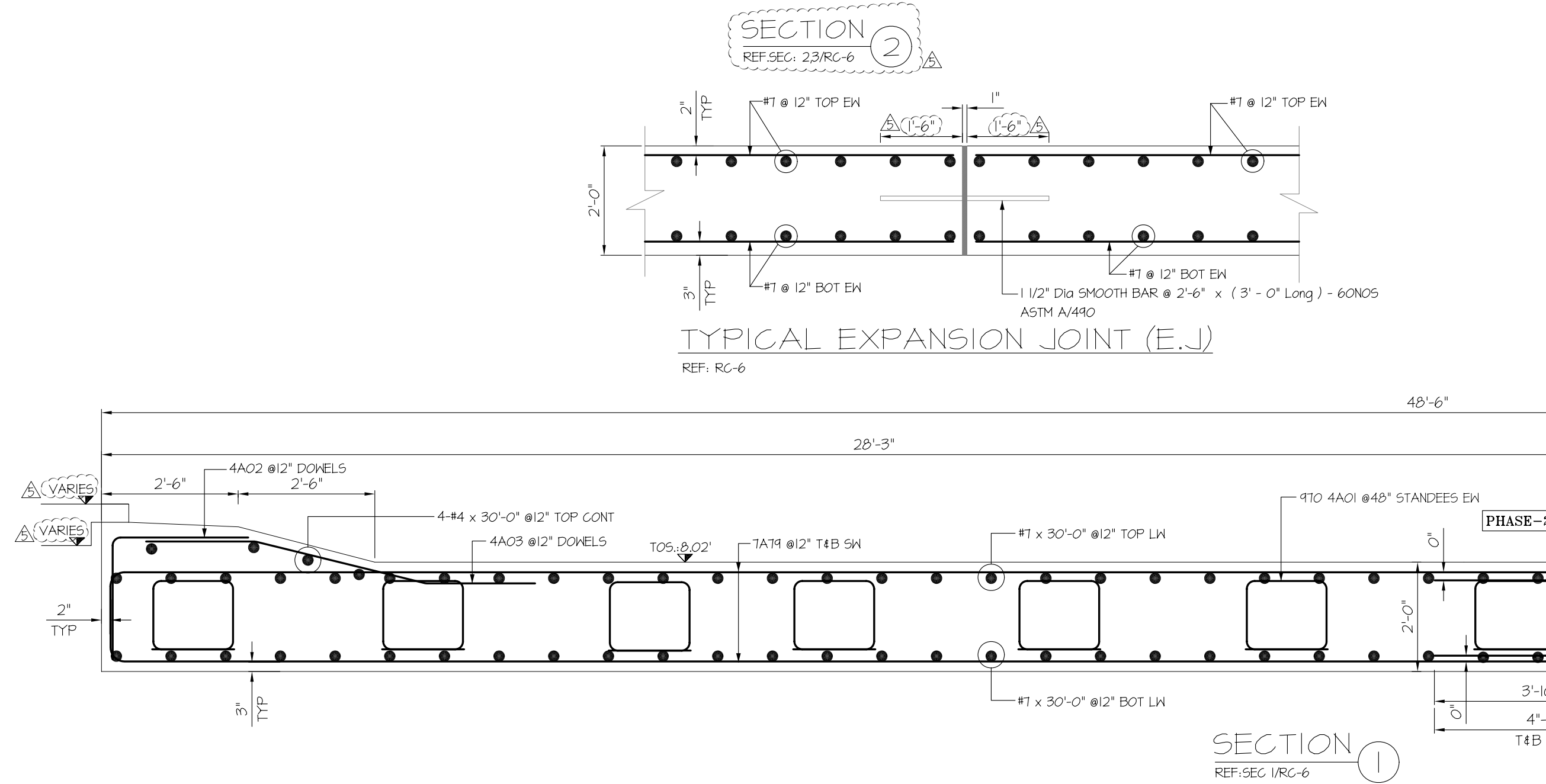
LAP TABLE		
BAR SIZE	TOP	OTHERS
#4	23"	17"
#5	28"	22"
#6	34"	26"
#7	48"	48"



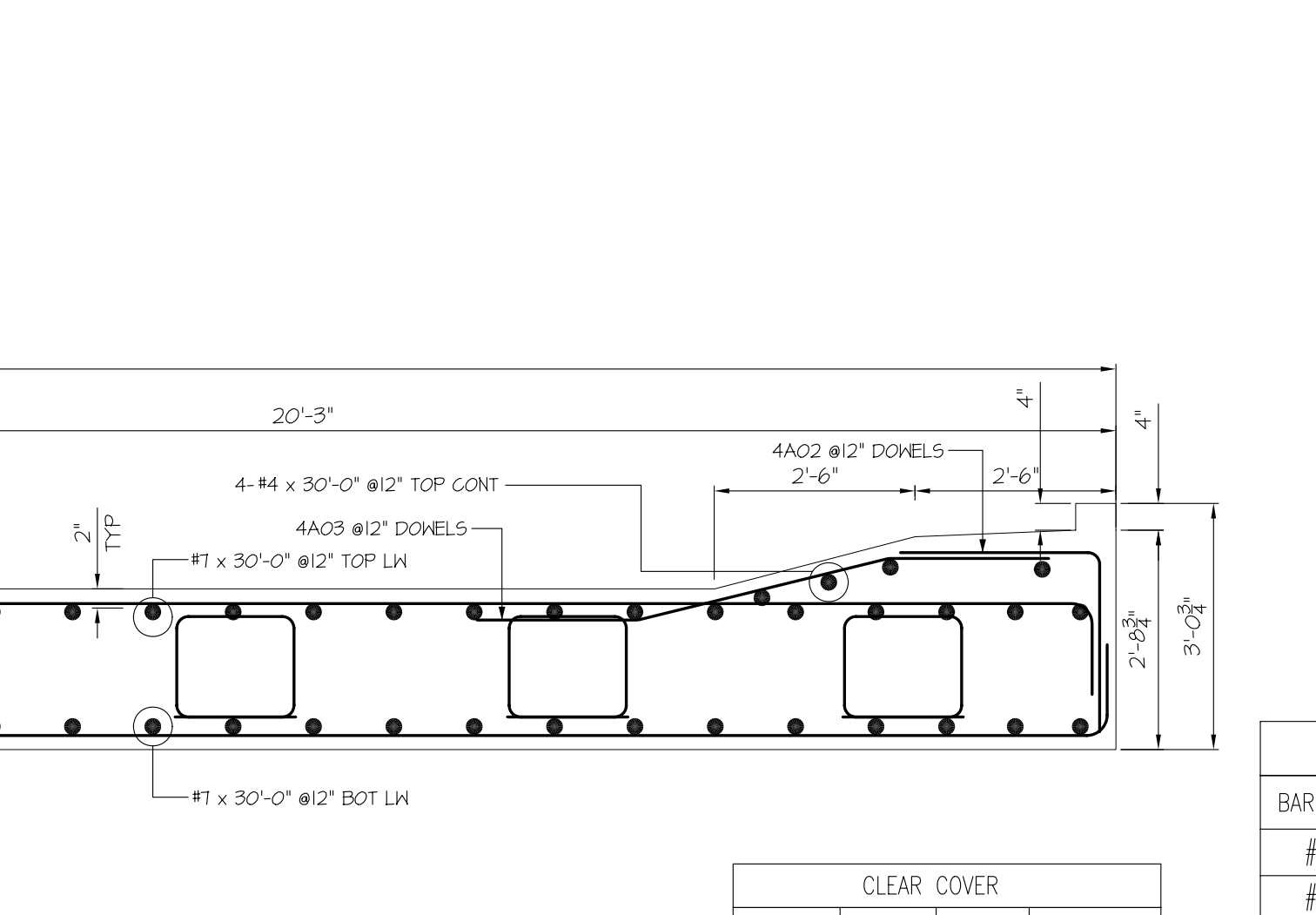
Release Code: MAT FOUNDATION		BENDING DETAILS.															
Bar Mark	Qty	Size	Total length	A'	B'	C'	D'	E'	F'	G'	H'	I'	J'	K'	L'	M'	
TA01	91	#1	30'2"	12'	28'0"												
TA02	14	#1	23'8"	12'	22'6"												
TA03	24	#1	26'8"	12'	25'6"												
TA04	88	#1	93'2"	12'	75'2"												
TA05	58	#1	23'11"	12'	22'9"												
TA06	12	#1	29'11"	12'	28'9"												
TA07	91	#1	24'2"	12'	23'2"												
TA08	21	#1	24'2"	12'	19'6"												
TA09	21	#1	24'11"	12'	20'3"												
TA10	21	#1	25'8"	12'	21'0"												
TA11	21	#1	26'2"	12'	21'6"												
TA12	21	#1	26'11"	12'	22'3"												
TA13	10	#1	13'6"	12'	12'4"												
TA14	10	#1	13'9"	12'	12'7"												
TA15	21	#1	5'6"	12'	3'2"												
TA16	14	#1	15'3"	12'	14'1"												
TA17	14	#1	10'0"	12'	9'8"												
TA18	28	#1	29'11"	12'	27'11"												
TA19	42	#1	24'2"	12'	23'0"												
TA20	61	#1	29'8"	12'	28'6"												
TA21	12	#1	29'5"	12'	28'3"												
TA22	10	#1	29'3"	12'	28'1"												
TA23	41	#1	21'5"	12'	20'3"												
TA24	61	#1	21'3"	12'	20'1"												
TA25	24	#1	21'0"	12'	19'10"												
TA26	61	#1	20'0"	12'	19'8"												
TA27	18	#1	20'8"	12'	19'6"												
TA28	12	#1	20'7"	12'	19'5"												
TA29	61	#1	20'9"	12'	19'7"												
TA30	10	#1	20'11"	12'	19'9"												
TA31	81	#1	21'2"	12'	20'0"												
TA32	12	#1	20'3"	12'	19'1"												
TA33	61	#1	20'7"	12'	19'5"												
TA34	61	#1	20'7"	12'	19'5"												
TA35	61	#1	20'11"	12'	19'9"												
TA36	61	#1	21'2"	12'	20'0"												
TA37	61	#1	21'4"	12'	20'2"												
TA38	14	#1	21'7"	12'	20'5"												
TA39	34	#1	21'9"	12'	20'7"												
TA40	21	#1	20'9"	12'	19'7"												
TA41	41	#1	21'5"	12'	20'3"												
TA42	20	#1	21'7"	12'	20'5"												
TA43	61	#1	20'7"	12'	19'5"												
TA44	38	#1	16'2"	12'	14'2"												
TA45	40	#1	6'7 1/2"	12'	3'0 1/2"												
TA46	10	#1	10'0"	12'	7'8"												
TA47	60	#1	7'4 1/2"	12'	3'8 3/8"												
TA48	21	#1	16'8 1/2"	12'	12'0"												
TA49	21	#1	15'8 1/2"	12'	11'0"												
TA50	21	#1	14'8 1/2"	12'	10'0"												
TA51	21	#1	13'8 1/2"	12'	9'0"												
TA52	21	#1	12'8 1/2"	12'	8'0"												
TA53	91	#1	14'9 1/2"	12'	9'4"												
TA54	21	#1	29'7"	12'	23'6"												
TA55	21	#1	28'7"	12'	22'6"												
TA56	21	#1	27'7"	12'	21'6"												
TA57	21	#1	26'7"	12'	20'6"												
TA58	21	#1	25'7"	12'	19'6"												
TA59	91	#1	17'4 1/2"	12'	11'3 1/2"												
TA60	21	#1	25'4 1/2"	12'	16'0"												



Release Code: MAT FOUNDATION		BENDING DETAILS.															
Bar Mark	Qty	Size	Total length	A'	B'	C'	D'	E'	F'	G'	H'	I'	J'	K'	L'	M'	
TA61	21	#1	24'4 1/2"	12'	19'4"												
TA62	21	#1	23'4 1/2"	12'	18'4"												
TA63	21	#1	22'4 1/2"	12'	17'4"												
TA64	21	#1	21'4 1/2"	12'	16'4"												
TA65	21	#1	18'1 1/2"	12'	12'11"												
TA66	21	#1	17'1 1/2"	12'	11'11"												
TA67	21	#1	16'1 1/2"	12'	10'11"												
TA68	21	#1	14'0 1/2"	12'	8'9"												
TA69	21	#1	13'1 1/2"	12'	7'6"												
TA70	10	#1	8'3 1/2"	12'	6'11"												
TA71	21	#1	23'9"	12'	17'7"												
TA72	21	#1	20'5"	12'	14'3"												
TA73	21	#1	20'4"	12'	14'2"												
TA74	21	#1	22'7"	12'	16'5"												
TA75	24	#1	25'7"	12'	19'5"												
TA76	20	#1	21'7"	12'	15'11"												
TA77	33	#1	30'5"	12'	23'3"												
TA78	41	#1	29'9"	12'	22'7"												
TA79	44	#1	29'0"	12'	21'8"												
TA80	61	#1	21'6"	12'	15'4"												
TA81	10	#1	23'6"	12'	17'4"												
TA82	10	#1	29'6"	12'	22'4"												
TA83	21	#1	23'6 1/2"	12'	16'6 1/2"												
TA84	21	#1	10'0"	12'	6'11"												
TA85	10	#1	24'8 1/2"	12'	17'3 1/2"												



Release Code: MAT FOUNDATION (TH.BAR)		BENDING DETAILS.															
Bar Mark	Qty	Size	Total length	A'	B'	C'	D'	E'	F'	G'	H'	I'	J'	K'	L'	M'	
TA86	12	#1	4'0"	4'0"													



ASTM A615 GRADE 60 UNCOATED  
REINFORCING STEEL PLACING DRAWING ONLY  
USE IN CONJUNCTION WITH CONTRACT DRAWINGS  
AND SPECIFICATIONS. ELEVATIONS & DIMENSIONS  
SHOWN ON THIS DRAWING ARE FOR DETAILING  
PURPOSES ONLY AND ARE NOT TO BE USED FOR  
CONSTRUCTION UNLESS VERIFIED BY THE  
ENGINEER OR CONTRACTOR

NO.	DATE	DESCRIPTION
5	01/07/2015	APPROVAL / DETAILER'S CORRECTION-2
4	01/06/2015	APPROVAL / DETAILER'S CORRECTION.
3	01/05/2015	REVAS PER E-MAIL COMM. (ADDED THREADED BARS)
2	12/31/2014	APPROVAL / REVAS PER LATEST DWG
1	11/24/2014	APPROVAL / REVAS PER LATEST DWG
0	11/01/2014	FOR APPROVAL

**SIMSONA CORPORATION**  
2275 Research Boulevard, Suite 500, Rockville, MD 20850  
Phone: 301-408-8553 Fax: 301-260-0294

STRUCTURE: WESTWAY TERMINAL RAILROAD.  
LOCATION: 2801 RICHMOND STREET PHILADELPHIA, PA

ARCHITECT: AMBRIC TECHNOLOGY CORPORATION  
ENGINEER: AMBRIC TECHNOLOGY CORPORATION  
CUSTOMER: ITECH CONSTRUCTION

DATE: 11/01/2014  
DRAWING COVERS: MAT FOUNDATION  
CONTRACT NUMBER: R2

USE IN CONJUNCTION WITH THE CONTRACT DRAWING: RC-1  
FOR SECTIONS SEE CONTRACT DRAWINGS: RC-2 TO RC-7

THIS PLACING DRAWING WAS PREPARED FROM CONTRACT DOCUMENTS DATED: 12-17-2014